



Joint Community Learning Campus

Perth and Kinross Council

Background

- Perth and Kinross Council are exploring the potential for a joint 2-18 community learning campus which could accommodate pupils from Angus, Dundee and Perth and Kinross.
- We do not yet know where the JCLC will be located but it is anticipated it will be located in West Dundee/South Angus/East Carse.
- Perth and Kinross Council are looking only for secondary provision.

Perth City Secondary Future

- Bertha Park High School opening August 2019
- New Perth High School estimated completion 2023/24
- Potential new Joint Community Learning Campus with Angus and Dundee City Councils

Key areas in exploring the potential new campus

- Informal consultation with communities
- Location & development
- Governance, education, legal, financial & planning aspects
- Statutory consultation
- Bigger picture for P&K secondary estate
- Collaboration between 3 Councils

Consultation Timeline

Action	Date Timeline
School community engagement sessions	23 April 2019 to 9 May 2019
Online questionnaire	23 April 2019 to 7 June 2019
Collate all engagement session feedback & report write up	June 2019 to August 2019
Report to Lifelong Learning Committee	4 September 2019

*Timetable is subject to change

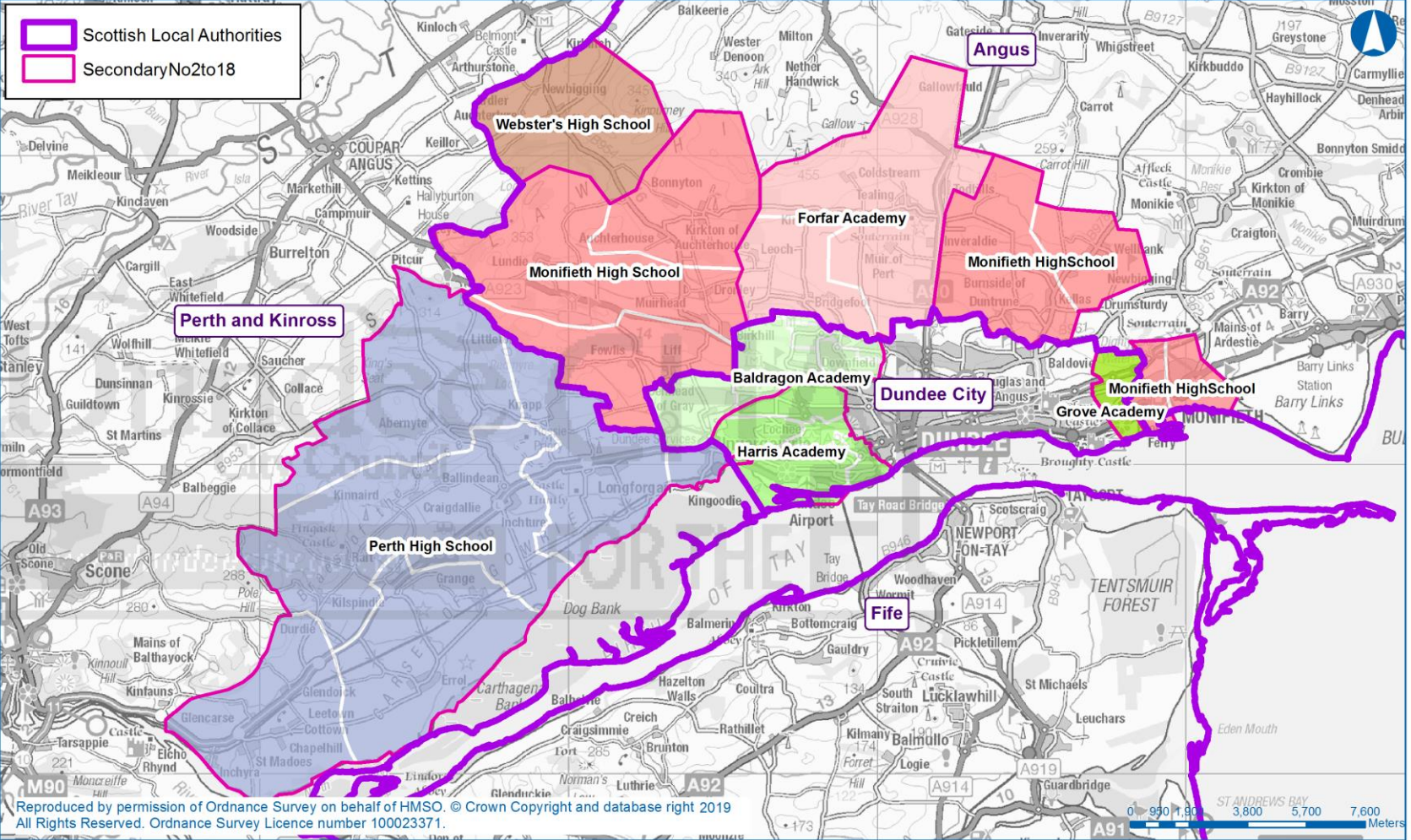
Indicative Campus Timeline

Action	Duration
Informal Engagement Process	6 months
Options and pre-consultation with communities if required	6 months
Obtain a suitable site	Between 1 & 3 years
Statutory Consultations	1 year
Design & construction of campus	Up to 4 years

*Timeline is subject to change

Secondary Provision, without a Joint Campus

(Only areas affected by the consultation are shown)

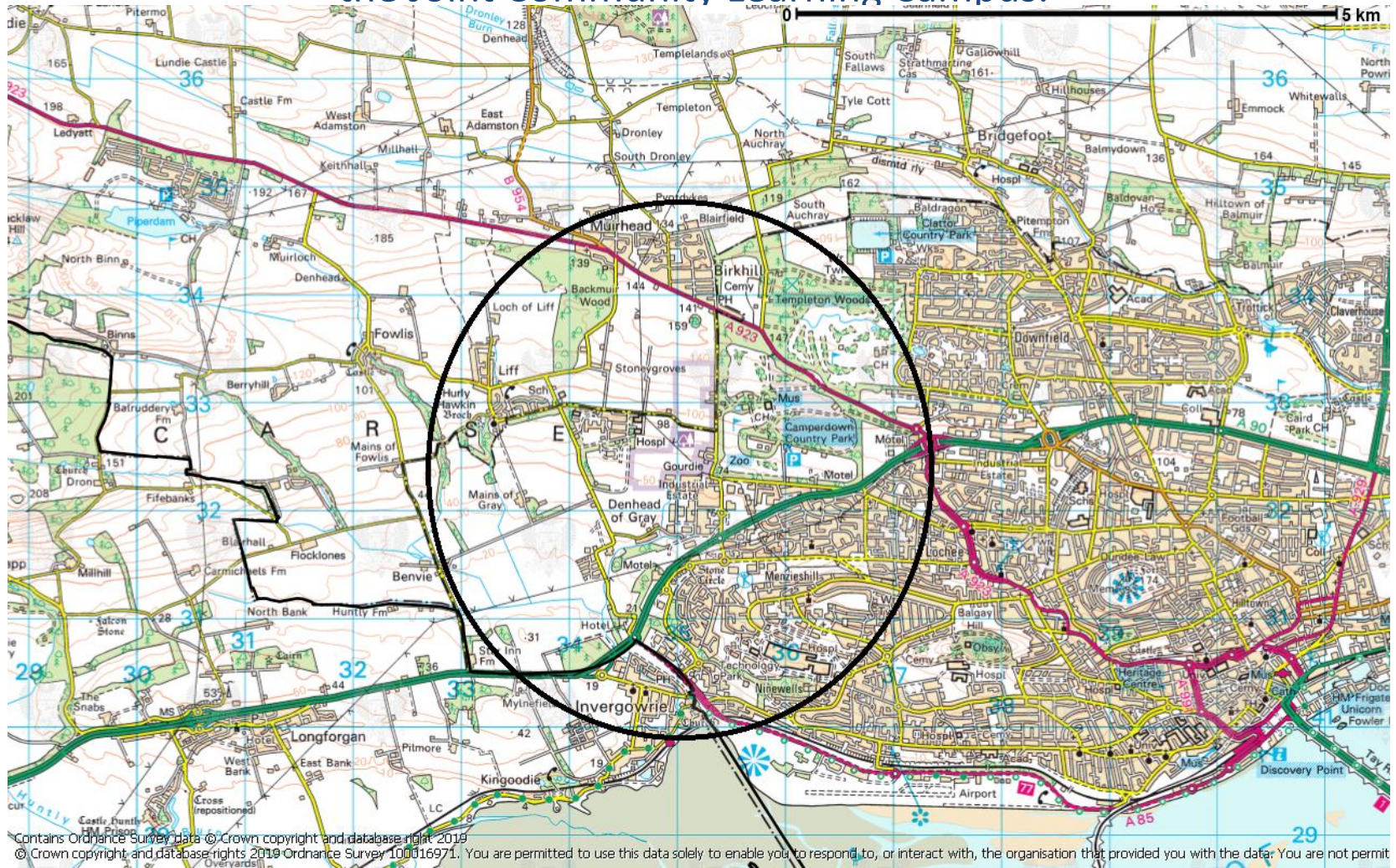


Reproduced by permission of Ordnance Survey on behalf of HMSO. © Crown Copyright and database right 2019
All Rights Reserved. Ordnance Survey Licence number 100023371.

Possible composition of the school

- 1100 capacity for secondary education for all 3 Councils
- This is approximately 400 pupil spaces for PKC (based on Abernyte, Inchtute, Invergowrie and Longforgan)
- No nursery or primary provision for PKC
- Community facilities

This map shows the approximate search area for a site for the Joint Community Learning Campus, and is being provided to give additional information about the overall area considered as suitable for the location of the Joint Community Learning Campus.

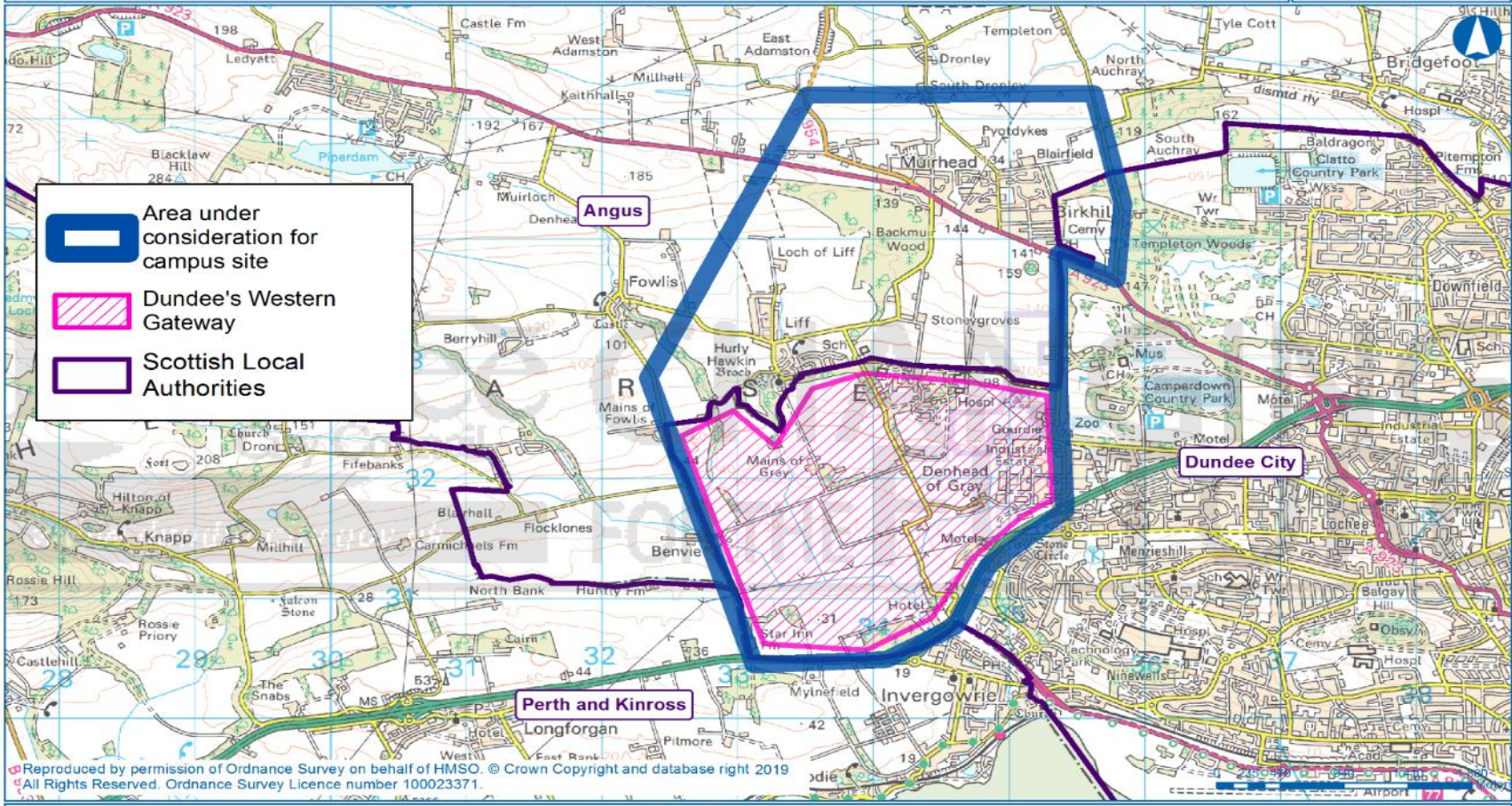


This map shows the area currently most likely to be considered

2-18 joint community learning campus

Dundee **CHANGING** FOR THE FUTURE
Community Plan

Dundee House
50 North Lindsay Street, DUNDEE
DD1 1QE



Reproduced by permission of Ordnance Survey on behalf of HMSO. © Crown Copyright and database right 2019
All Rights Reserved. Ordnance Survey Licence number 100023371.

Feedback

- The survey can be found through an internet search for “Perth and Kinross Council Consultation Hub”
- <https://consult.pkc.gov.uk>
- If you have any queries, please contact ecsresources@pkc.gov.uk