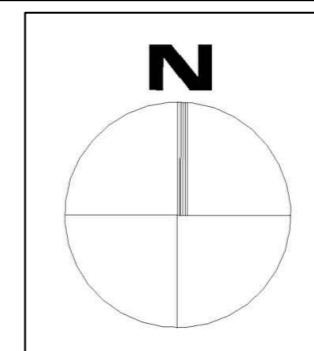


# LEGION PARK MASTERPLAN SKETCH DESIGN



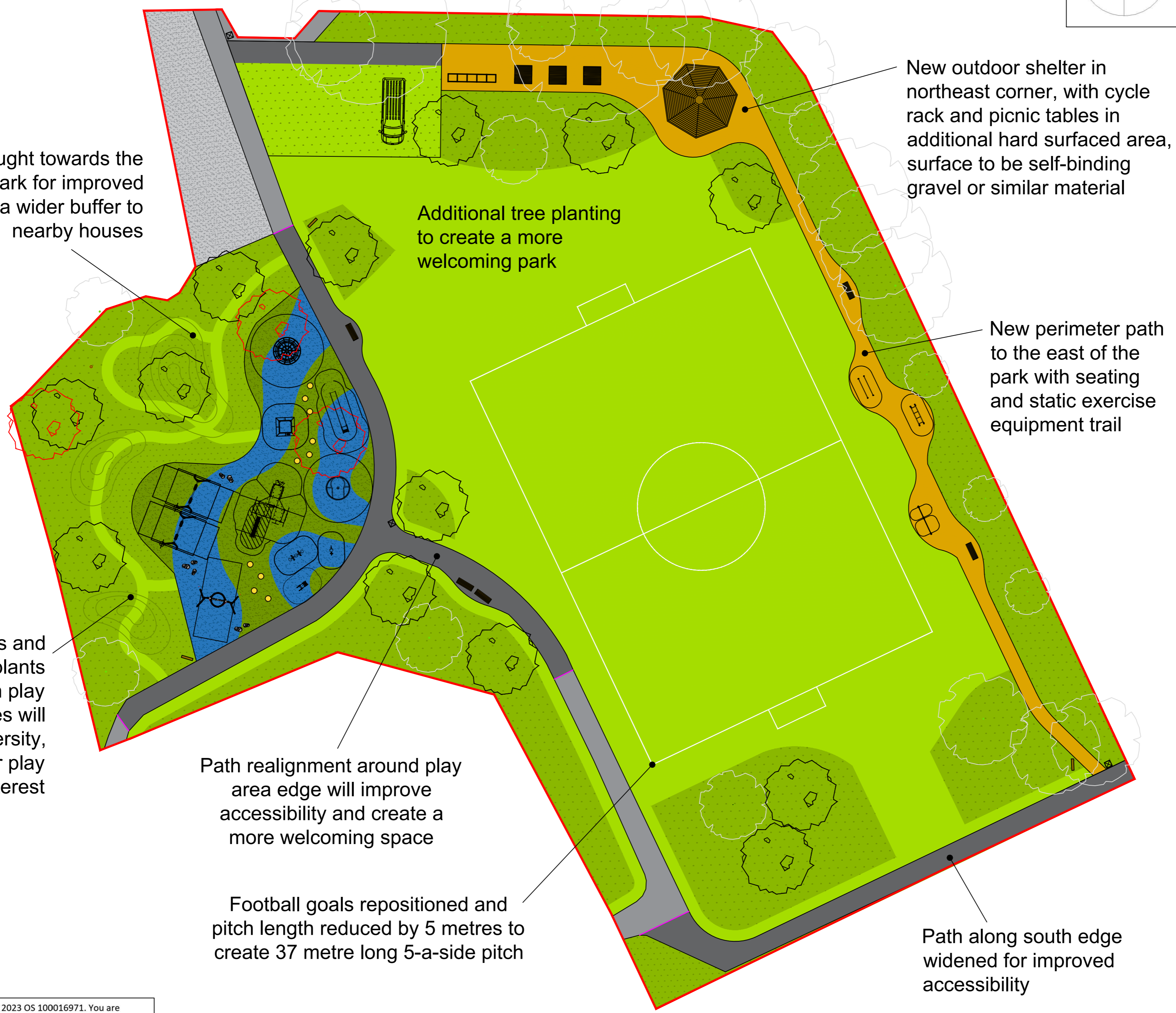
**Key:**

**Extent of Works:**

-  Site Boundary

**Discussion points:**

-  Amenity grass area
-  Reinforced grass parking area
-  Proposed uncut/Grow Wild area
-  Existing gravel garden area
-  Mulchbond safety surfacing
-  Proposed gravel path area
-  Existing tarmac paths
-  Amended/added tarmac paths
-  Possible tree removal
-  Existing tree
-  New tree



Play area brought towards the centre of the park for improved visibility and a wider buffer to nearby houses

Additional tree planting to create a more welcoming park

New outdoor shelter in northeast corner, with cycle rack and picnic tables in additional hard surfaced area, surface to be self-binding gravel or similar material

New perimeter path to the east of the park with seating and static exercise equipment trail

Grass mounds and additional trees, plants and bulbs between play area and houses will increase biodiversity, with mown paths for play interest

Path realignment around play area edge will improve accessibility and create a more welcoming space

Football goals repositioned and pitch length reduced by 5 metres to create 37 metre long 5-a-side pitch

Path along south edge widened for improved accessibility

Final design and content subject to further site investigations, detailed design process and review, and project funding.